



LIPNO **2025** CZECH REPUBLIC

Pirat European Championship 26. - 30. 7. 2025

Cadet World Championship 3. - 9. 8. 2025

RS Tera World Championship 4. - 8. 8. 2025

NOTICE OF RACE FESTIVAL OF SAILS (PART II.)

RS Tera (Pro and Sport Category) Class World Championship
Cadet World Championship (including Promotional Fleet)

Organising authority (OA) is Jachetní klub Černá v Pošumaví in conjunction with Czech RS Association, Asociace lodní třídy Cadet, z.s. and Czech Sailing Association.

The notation '[NP]' in a rule means that a boat may not protest another boat for breaking that rule. The international jury may refuse to hold a hearing when a boat protests based on these rules. This changes RRS 60.1 and 63.2(a).

The notation '[SP]' in a rule means that a standard penalty may be applied by the race committee or technical committee without a hearing or a discretionary penalty may be applied by the international jury with a hearing. This changes RRS A5.1.

1. RULES

- 1.1. The event is governed by the *rules* as defined in The Racing Rules of Sailing (RRS). Other documents under RRS Definition 'rule' (g) include:
 - Event Support Team Regulations (ESTR), as published on the official notice board;
 - Event Equipment Regulations (EER), as published on the official notice board;
- 1.2. RRS Appendix T, Arbitration, applies.
- 1.3. RRS Appendix P, Special Procedures for Rule 42, applies.
- 1.4. If there is a conflict between languages the English text takes precedence.

2. SAILING INSTRUCTIONS

- 2.1. The Sailing Instructions will be available on the official notice board from 1st July 2025.

3. COMMUNICATION

- 3.1. The official notice board (ONB) is located on the <https://1url.cz/@fos2>.
- 3.2. [DP] While racing, except in an emergency or when using equipment provided by the organizing authority, a boat shall not make voice or data transmissions and shall not receive voice or data communication that is not available to all boats.

4. ELIGIBILITY AND ENTRY

- 4.1. The event is open to all boats of the classes events stated in NoR 5.1.
- 4.2. Eligible are competitors:
 - aged 17 or under on 31 December 2025 in Cadet Class.
 - aged 19 or under on 31 December 2025 in RS Tera Class Pro Category.
 - aged 16 or under on 31 December 2025 in RS Tera Class Sport Category.
- 4.3. Russian and Belarusian nationals are not permitted to enter the event.
- 4.4. Eligible competitors of RS Tera Class may enter no later than 1st July 2025 by registering online at the event registration portal and paying the entry fee. This event registration portal is: <https://1url.cz/@rstera>
 - Cadet Class: <https://1url.cz/@cadet>
- 4.5. Eligible competitors of Cadet Class may enter no later than 1st July 2025 by registering online at the event registration portal and paying the entry fee. This event registration portal is <https://1url.cz/@cadet>. Entries for World Championships fleet must be supported and confirmed by their respective National Cadet Class Association (NCCA) or where there is no NCCA by their respective World Sailing Member National Authority (MNA) no later than 1st July 2025. Representatives of each NCCA must confirm the entries by emailing OA at fos@sailing.cz. For the World Championship fleet entries are limited to:
 - Fourteen (14) entries from the CZE NCCA
 - Ten (10) entries from the NCCA of each country with an Association
 - Three (3) entries from the MNA that does not have a NCCA
 - The reigning Cadet World Champion, if otherwise eligible, may enter independently of his or her NCCA.If the boat entry is not confirmed by the NCCA, the boat will be considered as an entry for the Promotional fleet. Promotional fleet entries are not limited.
- 4.6. Entries after midnight 1st July 2025 are at the OA's discretion.
- 4.7. Entry will be completed by registration on site.

- 4.8. The minimum number of entries for each class is stated in the table in NoR 5.1. The organizing authority may cancel a class if the minimum number of entries has not been reached by 30 May 2025. An undertaking on team numbers from NCCAs will satisfy this requirement for the Cadet Class.
- 4.9. All competitors shall present a signed and completed parent (guardian) consent and declaration form upon registration. The forms can be downloaded from the event registration page and ONB.
- 4.10. All competitors in RS Tera Class shall be members of the International RS Tera Class Association (IRSTCA). The membership fee is included in their entry fee. By registering, competitors agree to become members of the IRSTCA.
- 4.11. RS Sailing supplied Charter Boats are available to book through the RSSailing.club platform via the dedicated RS Tera events section: <https://www.rssailing.club>

5. ENTRY FEES

- 5.1. Entry fees are as follows:

Class or Individual	Entry Fee (€) Paid before 10th April 2025	Late Entry Fee (€) Paid after 10th April 2025	Minimum entries
RS Tera (Pro Category)	290	375	30
RS Tera (Sport Category)	290	375	30
Cadet Class	350	400	40
Support Person Vessel	100	100	N/A

- 5.2. The entry fee shall be paid via the online payment system (direct debit or credit card) upon entering, even if the boat does not show up. If the competitor cancels their entry, the refund will be as follows:
- A refund of 80% of the entry fee paid if cancelled before 1 June 2025.
 - No refund after 1 June 2025.
- 5.3. In the event of the event being cancelled, a minimum of 80% of the entry fee will be refunded after deduction of bank transfer fees

6. [DP] ADVERTISING AND IDENTIFICATION

- 6.1. Boats may be required to display event advertising chosen and supplied by the OA. Boats shall not display advertising from previous events.
- 6.2. The OA may provide bibs that competitors are required to wear.

7. FORMAT

- 7.1. The event will be sailed in single series. If there is more than 80 entries in the class or category, the event will consist of a qualifying series and a final series for that class.

8. SCHEDULE

8.1. Registration and Equipment Inspection:

Class	Date & Time	
Cadet	Friday (1.8.)	12:00-18:00
	Saturday (2.8.)	09:00-18:00
	Sunday (3.8.)	09:00-12:00
RS Tera (Pro Category)	Sunday (3.8.)	12:00-18:00
	Monday (4.8.)	09:00-12:00
RS Tera (Sport Category)	Sunday (3.8.)	12:00-18:00
	Monday (4.8.)	09:00-12:00

8.2. Each day of racing, Coaches and Competitors briefing & Daily Awards Ceremony will be held 90 minutes before scheduled time of the warning signal for that day. Location will be described in the Sailing Instructions.

8.3. Dates of racing, number of races and scheduled time of the warning signal for the first race for each class:

Class	Date	Warning Signal	Number of races
Cadet (World Championship Fleet)	Sunday (3.8.)	14:00	Practice race
	Monday (4.8.)	11:30	Up to 3 races
	Tuesday (5.8.)	10:30	Up to 3 races
	Wednesday (6.8.)	10:45	Up to 3 races
	Thursday (7.8.)		Reserve Day
	Friday (8.8.)	10:45	Up to 3 races
Cadet (Promotional Fleet)	Sunday (3.8.)	14:07	Practice race
	Monday (4.8.)	11:37	Up to 3 races
	Tuesday (5.8.)	10:37	Up to 3 races
	Wednesday (6.8.)	10:52	Up to 3 races
	Thursday (7.8.)		Reserve Day
	Friday (8.8.)	10:52	Up to 3 races
RS Tera (Pro Category)	Saturday (9.8.)	10:30	Up to 3 races
	Monday (4.8.)	14:00	Practice Race
	Tuesday (5.8.)	10:45	3 races
	Wednesday (6.8.)	10:30	3 races
	Thursday (7.8.)	10:45	3 races
RS Tera (Sport Category)	Friday (8.8.)	10:30	3 races
	Monday (4.8.)	14:07	Practice Race
	Tuesday (5.8.)	10:52	3 races
	Wednesday (6.8.)	10:37	3 races
	Thursday (7.8.)	10:52	3 races
	Friday (8.8.)	10:37	3 races

8.4. The total number of races shall not exceed 12 for either class/fleet.

8.5. On the last scheduled day of racing, no warning signal will be made after 16:00.

9. [DP] EQUIPMENT AND EQUIPMENT INSPECTION

- 9.1. Boats shall provide any measurement certificates required by the relevant class rules or copies thereof.
- 9.2. Boats shall also comply with RRS 78.1 from 60 minutes before the first scheduled warning signal until the end of the protest time limit of the last race of the event.
- 9.3. The procedures for inspections will be specified in the ERR.
- 9.4. Boats shall be available for inspection in accordance with ERR.
- 9.5. Boats may be inspected at any time.
- 9.6. RRS G3 will apply.

10. VENUE

- 10.1. The event will be hosted at Jachetní klub Černá v Posumaví, Černá v Posumaví 183, 38223, Czech Republic.
- 10.2. Addendum 'Map of the Venue' shows the location of the boat park, race office and other places in the club.
- 10.3. Addendum 'Racing Areas' shows the location of the racing areas.

11. COURSES

- 11.1. The courses will be windward/leeward, triangle, or trapezoid with optional finishing legs.

12. PENALTY SYSTEM

- 12.1. RS Tera Class only: RRS P2.2 and RRS P2.3 will not apply, and RRS P2.1 is changed so that it will apply to any penalty.
- 12.2. Cadet Class only: P2.3 will not apply, and P2.2 will apply to all second and subsequent penalties.
- 12.3. An international jury will be appointed in accordance with RRS 91(b). The right of appeal from its decisions is denied as provided in RRS 70.3(a).

13. SCORING

- 13.1. Four races for all classes are required to be completed to constitute a series.
- 13.2. When fewer than five races have been completed, a boat's series score shall be the total of her race scores.
- 13.3. When five to eight races have been completed, a boat's series score shall be the total of her race scores excluding her worst score.
- 13.4. When nine or more races have been completed, a boat's series score will be the total of her race scores excluding two worst scores.
- 13.5. RRS 90.3(e) applies.

14. SUPPORT PERSONS AND SUPPORT PERSON VESSELS

- 14.1. All support person vessels and designated drivers shall be registered with the organizing authority no later than 15 June 2025 by registering online and paying the registration fee. The registration will be completed by registration on site (dates and times as stated in NoR 8.1). The organizing authority or the race committee may refuse registrations or accept later registrations at their sole discretion.
- 14.2. Support persons and support person vessels shall comply with local legislation and 'Event Support Team Regulations' published on the official notice board.

- 14.3. The registration fee is 100 €. The registration fee includes the berthing fee for the scheduled racing days (NoR 8.3). In case of a longer berthing time, the support person vessel shall pay an additional fee for this period at the harbour master's office.
- 14.4. The registration fee shall be paid via the online payment system (direct debit or credit card) upon registration, even if the support person vessel does not show up. The fee is non-refundable, except for the supported class event being cancelled by the organizing authority or if the registration is refused. The registration fee does not include the craning fee for launching and haul-out.
- 14.5. Each support person vessel at the event shall be insured with a valid third-party liability insurance with a minimum cover of 350,000 EUR (or the equivalent) per incident and valid for the event.
- 14.6. At all times, support persons including the registered driver(s) of a support person vessel shall comply with directions given by or under the authority of a race official. This includes assisting in rescue operations when requested to do so.

15. [SP] BERTHING

- 15.1. Unless otherwise instructed, boats shall be kept in their assigned places in the boat park.

16. [NP] [DP] MEDIA AND MARKETING RIGHTS, CAMERAS AND ELECTRONIC EQUIPMENT

- 16.1. Boats may be required to carry cameras, sound equipment, and positioning equipment as specified and supplied by the organizing authority.
- 16.2. By entering the event consent for imagery has been given by a competitor. Competitors grant to the Organising Authority, the right in perpetuity to make, use and show, from time to time at their discretion, any motion pictures and live, taped or filmed television and other reproductions of the competitors without compensation. Reproductions may be used for promotion of the regatta or promotion of Organising Authority.

17. RISK STATEMENT

- 17.1. RRS 3 RRS states: "The responsibility for a boat's decision to participate in a race or to continue racing is hers alone". Sailing is by its nature an unpredictable sport and therefore inherently involves an element of risk. By taking part in this event, each competitor agrees and acknowledges that:
- they are aware of the inherent element of risk involved in the sport and accept responsibility for the exposure of themselves, their crew and their boat to such inherent risk whilst taking part in the Event whether afloat or ashore;
 - they accept responsibility for any injury, damage or loss to the extent caused by their own actions or omissions;
 - they do not have any medical conditions or impairments that would affect their ability to safely take part in the Event;
 - they believe that the boat is in good order, equipped to sail in the Event and that they are fit to participate;

- it is their responsibility to familiarize themselves with any risk specific to the venue or the Event drawn to their attention by any rules and official communication and to attend any competitors briefing held during the Event
- the action of a race management team, rescue boats and other officials or organising authority does not relieve them of their own responsibilities.

18. INSURANCE

18.1. Each boat at the event shall be insured with a valid third-party liability insurance with a minimum cover of 350,000 EUR (or the equivalent) per incident and valid for the event.

19. PRIZES

19.1. Prizes will be awarded in the RS Tera Class (Pro Category) as follows:

- 1st to 10th overall
- 1st, 2nd and 3rd boys
- 1st, 2nd and 3rd girls
- 1st place – Practice Race

19.2. Prizes will be awarded in the RS Tera Class (Sport Category) as follows:

- 1st to 10th overall
- 1st, 2nd and 3rd boys
- 1st, 2nd and 3rd girls
- 1st place – Practice Race

19.3. Prizes will be awarded in the Cadet Class as follows:

- 1st place – Practice Race (both fleets)
- 1st place overall Worlds Fleet – Yachting World Trophy
- 2nd to 10th overall Worlds Fleet
- 1st place non-host nation helm Worlds Fleet
- Most improved helm Worlds Fleet – Alf Simmons Trophy
- 1st under 16 helm Worlds Fleet – Wilson Trophy
- 1st under 15 helm Worlds Fleet – Ellis Trophy
- 1st female helm – Ladies Trophy
- 1st male helm – Burnell Family Trophy
- 1st to 5th overall Promotional Fleet
- Youngest Male Competitor & Youngest Female Competitor not from the host nation.

19.4. Daily prizes will be awarded during the competitors briefing following previous day.

19.5. Additional prizes may be awarded at the discretion of the Organising Authority.

19.6. Titles will be awarded in the RS Tera Class as follows:

- RS Tera (Pro Category) Overall World Champion
- RS Tera (Sport Category) Overall World Champion

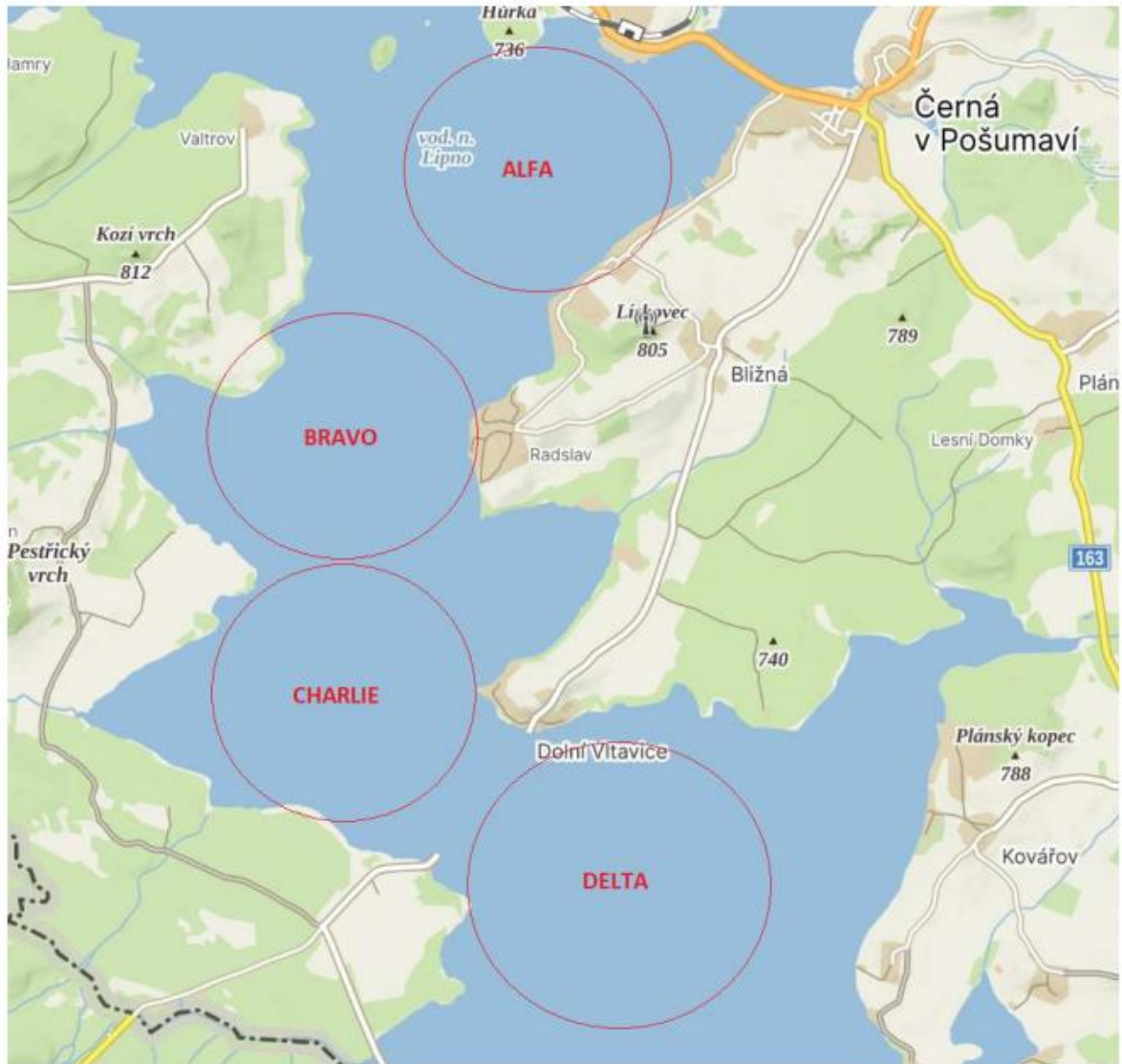
19.7. Titles will be awarded in the Cadet Class as follows:

- Cadet Overall World Champion

ADDENDUM MAP OF THE VENUE



ADDENDUM RACING AREAS



ADDITIONAL IMPORTANT INFORMATIONS (NOT PART OF THE NOTICE OF RACE)

1. ACCOMMODATION

Possibilities for camping, staying in motorhomes and campers are as follows:

Kemp Jestřábí (<https://www.camplipno.com/>)

This campsite is just „over the fence“ of the venue. If you want to better organise your stay and be close to your sailing friends, please contact reception directly info@kemplipno.cz. Please make sure that you will notify the reception that you are participating in the Festival of Sails.

Kemp Villa Bohemia (<https://www.villabohemia.cz/informace/>)

Cosy campsite which is in walking distance (7 minutes) from the venue. If you want to better organise your stay and be close to your sailing friends, please contact reception directly camp@villabohemia.cz. Please make sure that you will notify the reception that you are participating in the Festival of Sails.

Camp Olšina (<https://www.campingolsina.cz/?sLang=en>)

Beautiful campsite located on the banks of the "small" Lipno is 10 minutes of drive from the venue. If you want to better organise your stay and be close to your sailing friends, please contact reception directly info@campingolsina.cz. Please make sure that you will notify the reception that you are participating in the Festival of Sails.

There is not a possibility to stay in the club due to number of expected entries.

If you are looking for an accommodation „under the roof“ there are some tips:

Hotel Jestřábí (<https://www.hoteljestrabi.cz/en/>)

Hotel Racek (<https://www.hotel-racek.cz/en/accommodation-at-lake-hotel-racek-lipno-cerna-v-posumavi/1/>)

Lakeside Appartments (<https://www.lakesidelipno.cz/en>)

Kemp Jestřábí (<https://www.camplipno.com/>)

Costaplana Lipno (<https://lipno.costaplana.cz/>)

2. EARLY ARRIVALS TO THE CLUB

There is a possibility to train in the club before the event as well as to moor coach ribs.

If you plan to come to the club earlier than the first day of measurement (registration), please let us know at fos@sailing.cz and pay the appropriate fee according to the current price list of the club. We are organizing Pirat European Championship during the first part of Festival of Sails, and we need to have logistics and your safety under control.

3. FOOD IN THE CLUB

There will be an opportunity to eat at the club each day. Catering will provide breakfast, snacks, lunch and dinner. Sailors and coaches will have snacks/food after each day of racing included in their entry fees. The catering prefers payments in Czech Crowns. If you need ATM to get some Czech Crowns, there you go: <https://maps.app.goo.gl/uaBWhuVyDkySQJWLA>

If you need to do a grocery, there are some directions:

COOP Černá v Pošumaví (<https://maps.app.goo.gl/NkpEmmzXFKtDA9Wk6>)

COOP Horní Planá (<https://maps.app.goo.gl/SgoCPkRPjNi33WbD6>)

Kaufland Český Krumlov (<https://maps.app.goo.gl/CH2EvQ7K5xgKuxFcA>)

4. CLUB RULES

We need you to follow the rules so that everything runs smoothly:

- Park your car in the designated places in the club or in front of the club. Never park your car on the grass in front of the second gate. This is private property, and you may be fined.
- Do not enter the bathrooms in wetsuit or with boots from sand. Sand can go down the drain
- If you have a dog, please keep it on the leash. The harbourmaster has a friendly husky named Thor, but he defends his property. Never touch the dog without asking harbourmaster.
- If you are mooring your Support Person Vessels, please do it only on the designated spots.
- Be in the WhatsApp group to be always updated!

5. CONTACTS AND KEY PERSONS

Name	Role	Telephone / WhatsApp	Email
Václav Brabec	Event manager / PRO	+420 603 570 367	brabec@sailing.cz
Roman Vašík	Head of Race Office	+ 420 777 189 776	fos@sailing.cz