



UK RS Tera Class Association

Safeguarding adults policy and guidelines

The UK RS Tera Class Association is committed to safeguarding adults at risk taking part in its activities from physical, sexual, psychological, emotional or financial harm or neglect. We recognise that everyone, irrespective of age, disability, gender reassignment, race, religion or belief, sex, sexual orientation, pregnancy and maternity, marriage or civil partnership or social status, has a right to protection from discrimination and abuse.

The UK RS Tera Class Association takes all reasonable steps to ensure that, by providing staff and volunteers with appropriate procedures and training, it offers a safe environment for all participants. Everyone will be treated with dignity and respect.

All members and volunteers should be aware of the policy and the Code of Conduct below.

Welfare Officer

The Association Welfare Officer is: Mike Casey michae1_casey@hotmail.co.uk

Staff and Volunteers

All staff and volunteers whose role bring them into regular contact with adults at risk will be asked to provide references. The Welfare Officer and those regularly instructing, coaching or supervising adults at risk will also be asked to apply for an Enhanced Criminal Records Disclosure.

Good Practice

All members of the Association should follow the good practice guidelines attached. Those working with adults at risk should be aware of the guidance on recognising abuse (see RYA Appendix A).

Concerns

Anyone who is concerned about the welfare of an adult, either outside the sport or within the Class, should inform the Class Welfare Officer immediately, in strict confidence. The Class Welfare Officer will follow the procedures (see Flowcharts 1 and 2 below).

Any member of the Class failing to comply with the Safeguarding Adults policy and any relevant Codes of Conduct may be subject to disciplinary action under Club Rule XX.

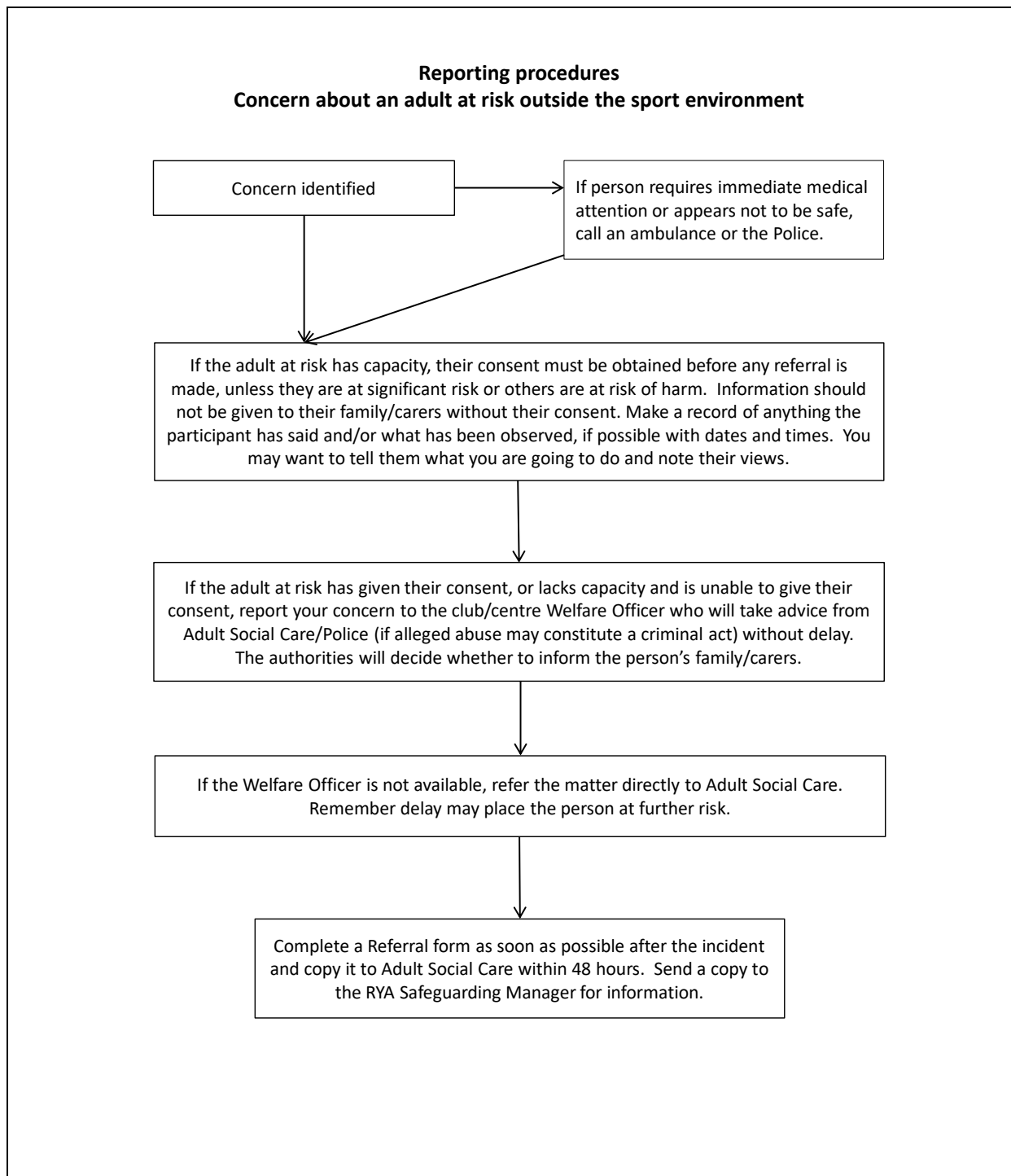
Reporting Procedures

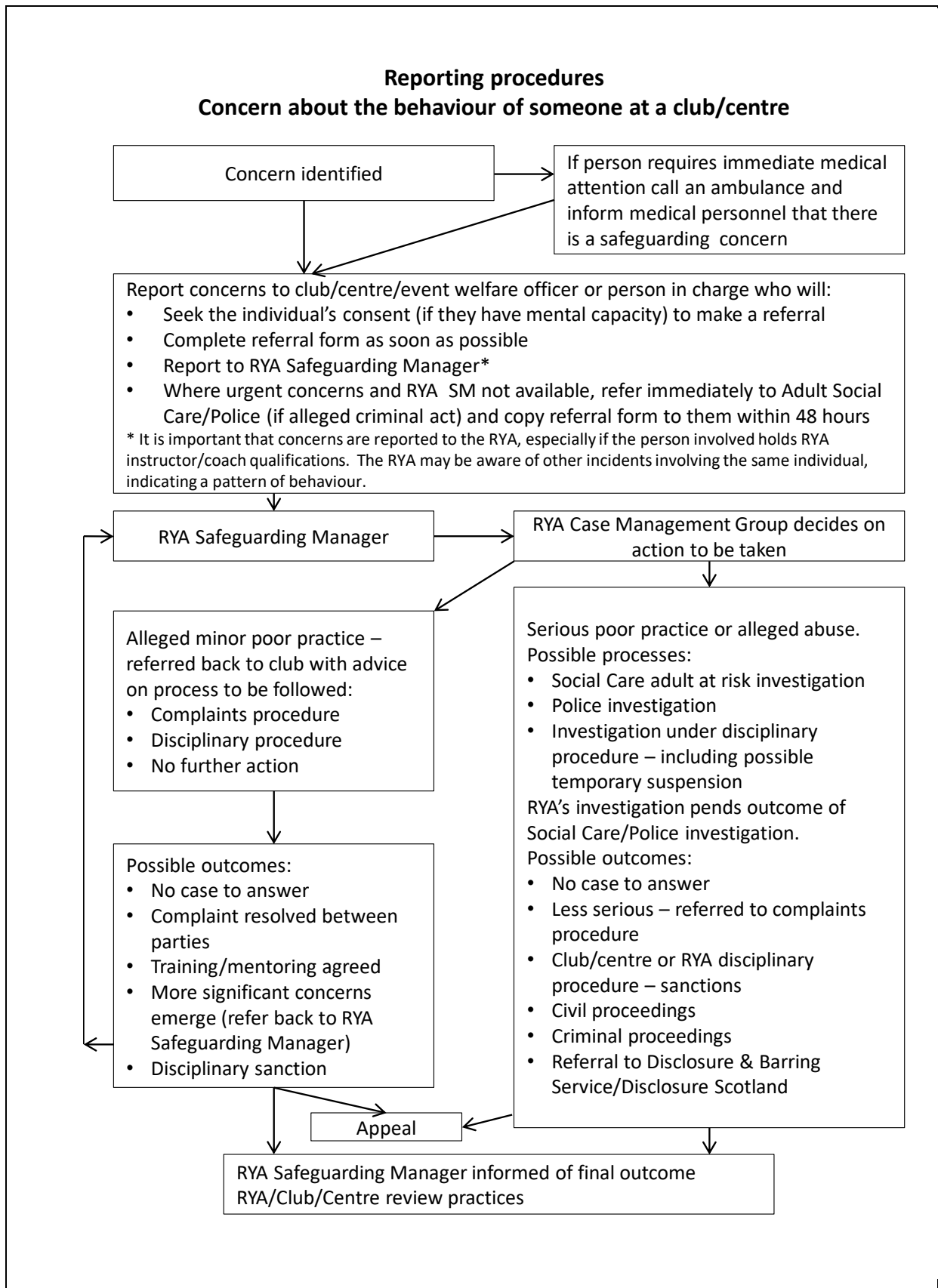
Revised March 2015

If you are uncertain what to do at any stage, contact the RYA's Safeguarding Manager on 023 8060 4104 or your local authority Adult Social Care department.

Details of Adult Social Care departments and emergency duty teams are listed on local authority websites and in local phone books. If you are unable to find the appropriate contact number, call the RYA's Safeguarding Manager or, if the person is at immediate risk, the Police.

Flowchart 1





Information

Useful Contacts

Revised April 2018

Royal Yachting Association

Andrea Gates
Safeguarding and Equality Manager
RYA House, Ensign Way
Hamble
Southampton
SO31 4YA
Tel: 023 8060 4297
E-mail: safeguarding@rya.org.uk
Website: www.rya.org.uk/about-us/policies/safeguarding

Social Care Services

Your local phone book or the website for your County Council or unitary local authority will list numbers for Adult Services, generally with separate numbers for Adult Social Care and for the Emergency Duty Team (out of hours service).

Ann Craft Trust

The Ann Craft Trust (ACT) supports organisations in the statutory, independent and voluntary sectors across the UK to protect disabled children and adults at risk. 'Safeguarding Adults in Sport and Physical Activity' is a programme supported by Sport England to help sports organisations to develop best practice in safeguarding adults at risk. They provide a range of resources and training.
Tel: 0115 9515 400
Website: <http://www.anncrafttrust.org/safeguarding-adults-sport-activity/>

The following is a small selection of charities that support people with different needs and disabilities. A more comprehensive list can be found in the Resource Pack on the Ann Craft Trust website.

Action on Elder Abuse helpline

Tel: 0808 808 8141
Website: www.elderabuse.org.uk

Dementia UK

Tel: 0800 888 6678
Website: www.dementiauk.org

Mencap Direct

Tel: 0808 808 1111
E-mail: help@mencap.org.uk
Website: www.mencap.org.uk

MIND – mental health charity

Tel: 0300 123 3393
Text: 86463
E-mail: info@mind.org.uk
Website: www.mind.org.uk

National Autistic Society

Tel: 020 7833 2299

Website: www.nas.org.uk

Victim Support

Tel: 0808 168 9111

www.victimsupport.com

Disclosure and Barring Service (DBS) – RYA is Registered Body

Website: <https://www.gov.uk/government/organisations/disclosure-and-barring-service>

AccessNI – RYA is Registered Body

Website: www.nidirect.gov.uk/accessni

Volunteer Scotland Disclosure Services – RYA is Enrolled Body

Website: www.volunteerscotland.net/disclosure-services

Disclosure Scotland (for referrals)

<https://www.mygov.scot/pvg-referrals/>

UK Coaching

Provide training on coaching people with disabilities

Website: www.ukcoaching.org

Good Practice Guide

Revised April 2018

Handout for Instructors, Coaches and Volunteers

This guide only covers the essential points of good practice when working with adults at risk. You should also read the organisation's Safeguarding Policy and Procedures which are available for reference at all times.

- Always communicate clearly, in whatever way best suits the individual, and check their understanding and expectations
- Always try to work in an open environment in view of others
- Avoid spending any significant time working with adults at risk in isolation
- Do not take an adult at risk alone in a car, however short the journey, unless you are certain that the individual has the capacity to decide to accept a lift
- Do not take an adult at risk to your home as part of your organisation's activity
- Where any of these is unavoidable, ensure that it only occurs with the full knowledge and consent of someone in charge of the organisation or the person's carers
- Design training programmes that are within the ability of the individual
- If you need to help someone with a wetsuit or buoyancy aid or provide physical assistance or support, make sure you are in full view of others
- Take great care with communications via mobile phone, e-mail or social media that might be misunderstood or shared inappropriately. In general, only send group communications about organisational matters using these methods. If it's essential to send an individual message to a person who has a learning disability or other impairment that might affect their understanding, copy it to their carer.

You should never:

- engage in rough, physical or sexually provocative games or activities
- allow or engage in inappropriate touching of any form
- use inappropriate language
- make sexually suggestive comments, even in fun
- fail to respond to an allegation made by an adult at risk; always act
- do things of a personal nature that the person can do for themselves.

It may sometimes be necessary to do things of a personal nature to help someone with a physical or learning disability. These tasks should only be carried out with the full understanding and consent of both the individual (where possible) and their carers. In an emergency situation which requires this type of help, if the individual lacks the capacity to give consent, carers should be fully informed. In such situations it is important to ensure that anyone present is sensitive to the individual and undertakes personal care tasks with the utmost discretion.

Code of Conduct

Revised March 2015

It is the policy of The UK RS Tera Class Association that all participants, coaches, instructors, officials, parents/carers and volunteers show respect and understanding for each other, treat everyone equally within the context of the sport and conduct themselves in a way that reflects the principles of the organisation. The aim is for all participants to enjoy their sport and to improve performance.

Abusive language, swearing, intimidation, aggressive behaviour or lack of respect for others and their property will not be tolerated and may lead to disciplinary action.

Participants

- Listen to and accept what you are asked to do to improve your performance and keep you safe
- Respect other participants, coaches, instructors, officials and volunteers
- Abide by the rules and play fairly
- Do your best at all times
- Never bully others either in person, by phone, by text or online
- Take care of all property belonging to other participants, the club/organisation or its members.
-

Carers

- Accept that adult participants have a right to take risks and to take decisions about their welfare, unless they lack the capacity to do so as defined by the Mental Health Act 2005
- Support the participant's involvement and help them enjoy their sport
- Help the participant to recognise good performance, not just results
- Never force the participant to take part in sport
- Never punish or belittle the participant for losing or making mistakes
- Encourage and guide the participant to accept responsibility for their own conduct and performance
- Respect and support the instructor/coach
- Accept officials' judgements and recognise good performance by all participants
- Use established procedures where there is a genuine concern or dispute
- Inform the club or event organisers of relevant medical information
- Ensure that the participant wears suitable clothing and has appropriate food and drink
- Provide contact details and be available when required
- Take responsibility for the participant's safety and conduct in and around the clubhouse/event venue

Coaches, Instructors, Officials and Volunteers

- Consider the welfare and safety of participants before the development of performance
- Encourage participants to value their performance and not just results
- Promote fair play and never condone cheating
- Ensure that all activities are appropriate to the age, ability and experience of those taking part
- Build relationships based on mutual trust and respect
- Work in an open environment
- Avoid unnecessary physical contact with young or vulnerable people
- Be an excellent role model and display consistently high standards of behaviour and appearance
- Do not drink alcohol or smoke when working directly with young people
- Communicate clearly with participants and carers
- Be aware of any relevant medical information

- Follow RYA and club/class guidelines and policies
- Holders of RYA Instructor and Coach qualifications must also comply with the RYA Code of Ethics and Conduct
- Holders of RYA Race Official appointments must also comply with the RYA Race Officials Code of Conduct.

If you are concerned that someone is not following the Code of Conduct, you should inform your organisation's Welfare Officer or the person in charge of the activity.

What is abuse?

Revised April 2018

(Based on the statutory guidance supporting the implementation of the Care Act 2014)

Abuse is a violation of an individual's human and civil rights by another person or persons.

Adults at risk may be abused by a wide range of people including family members, professional staff, care workers, volunteers, other service users, neighbours, friends, and individuals who deliberately exploit vulnerable people. Abuse may occur when an adult at risk lives alone or with a relative, within nursing, residential or day care settings, hospitals and other places assumed to be safe, or in public places.

The following is not intended to be an exhaustive list of types of abuse or exploitation but an illustrative guide as to the sort of behaviour which could give rise to a safeguarding concern:

Physical abuse - including assault, hitting, slapping, pushing, misuse of medication, restraint, or inappropriate physical sanctions.

Domestic violence – including psychological, physical, sexual, financial, emotional abuse; so called 'honour' based violence. This won't happen at a club/centre, but there could be concerns about a participant's home situation.

Sexual abuse - including rape, indecent exposure, sexual harassment, inappropriate looking or touching, sexual teasing or innuendo, sexual photography, subjections to pornography or witnessing sexual acts, indecent exposure and sexual assault or sexual acts to which the adult has not consented or was pressured into consenting.

Psychological abuse - including emotional abuse, threats of harm or abandonment, deprivation of contact, humiliation, blaming, controlling, intimidation, coercion, harassment, verbal abuse, isolation or unreasonable and unjustified withdrawal from services or supportive networks. In a club context this might include excluding a member from social activities.

Financial or material abuse - including theft, fraud, internet scamming, coercion in relation to an adult's financial affairs or arrangements, including in connection with wills, property, inheritance or financial transactions, or the misuse or misappropriation of property, possessions or benefits. People with learning disabilities or dementia are particularly vulnerable to this type of abuse. An example might be encouraging someone to book and pay for training courses that are inappropriate for their level of ability, or to purchase sailing clothing or equipment they don't need.

Discriminatory abuse - including forms of harassment, slurs or similar treatment; because of race, gender and gender identity, age, disability, sexual orientation or religion.

Neglect and acts of omission - including ignoring medical, emotional or physical care needs, failure to provide access to appropriate health, care and support or educational services, the withholding of the necessities of life, such as medication, adequate nutrition and heating; or in a watersports context,

failing to ensure that the person is adequately protected from the cold or sun or properly hydrated while on the water.

Self-neglect – this covers a wide range of behaviour neglecting to care for one’s personal hygiene, health or surroundings and includes behaviour such as hoarding. Self-neglect might indicate that the person is not receiving adequate support or care, or could be an indication of a mental health issue such as depression.

Organisational abuse – including neglect and poor care practice within an institution or specific care setting such as a hospital or care home, for example, or in relation to care provided in one’s own home. This may range from one-off incidents to on-going ill-treatment. It can be through neglect or poor professional practice as a result of the structure, policies, processes and practices within an organisation.

Modern slavery – encompasses slavery, human trafficking, forced labour and domestic servitude. Traffickers and slave masters use whatever means they have at their disposal to coerce, deceive and force individuals into a life of abuse, servitude and inhumane treatment.

Not included in the Care Act 2014 but also relevant:

Bullying (including ‘cyber bullying’ by text, e-mail, social media etc) - may be seen as deliberately hurtful behaviour, usually repeated or sustained over a period of time, where it is difficult for those being bullied to defend themselves. The bully may be another vulnerable person. Although anyone can be the target of bullying, victims are typically shy, sensitive and perhaps anxious or insecure. Sometimes they are singled out for physical reasons – being overweight, physically small, having a disability - or for belonging to a different race, faith or culture.

Mate Crime – a ‘mate crime’ as defined by the Safety Net Project is ‘when vulnerable people are befriended by members of the community who go on to exploit and take advantage of them. It may not be an illegal act but still has a negative effect on the individual’. Mate Crime is carried out by someone the adult knows. There have been a number of serious cases relating to people with a learning disability who were seriously harmed by people who purported to be their friends.

Radicalisation

The aim of radicalisation is to inspire new recruits, embed extreme views and persuade vulnerable individuals to the legitimacy of a cause. This may be direct through a relationship, or through social media.

Recognising abuse

Revised April 2017

Patterns of abuse vary and include:

- Serial abusing in which the perpetrator seeks out and ‘grooms’ individuals. Sexual abuse sometimes falls into this pattern as do some forms of financial abuse
- Long-term abuse in the context of an ongoing family relationship such as domestic violence between spouses or generations or persistent psychological abuse; or
- Opportunistic abuse such as theft occurring because money or valuable items have been left lying around.

Signs and indicators that may suggest someone is being abused or neglected include:

- Unexplained bruises or injuries – or lack of medical attention when an injury has occurred
- Someone losing or gaining weight, or an unkempt appearance
- A change in behaviour or confidence
- Self-harming
- A person’s belongings or money go missing
- The person is not attending, or no longer enjoying, their sessions
- A person has a fear of a particular group or individual
- A disclosure – someone tells you or another person that they are being abused.

If you are concerned

Revised April 2017

If there are concerns about abuse taking place in the person’s home, talking to their carers might put them at greater risk. If you cannot talk to the carers, consult your organisation’s designated Welfare Officer or the person in charge. It is this person’s responsibility to make the decision to contact Adult Social Care Services. It is NOT their responsibility to decide if abuse is taking place, BUT it is their responsibility to act on your concerns.

Social care professionals involved in taking decisions about adults at risk must take all of the circumstances into account and act in the individual’s best interests. You are not expected to be able to take such decisions.

The following six principles inform the way in which professionals and other staff in care and support services and other public services work with adults:

- Empowerment – People being supported and encouraged to make their own decisions and informed consent
- Prevention – It is better to take action before harm occurs
- Proportionality – The least intrusive response appropriate to the risk presented
- Protection – Support and representation for those in greatest need
- Partnership – Local solutions through services working with their communities. Communities have a part to play in preventing, detecting and reporting neglect and abuse
- Accountability – Accountability and transparency in delivering safeguarding.

Some instances of abuse will constitute a criminal offence, for example assault, sexual assault and rape, fraud or other forms of financial exploitation and certain forms of discrimination. This type of abuse should be reported to the Police.

Review date:	Reviewed by:
May 2020	Marcus Collingbourne
December 2022	Marcus Collingbourne